

Ótánjá Sálláŋa

Living Things

Translated by:
Bariwarig Tooduo

Second Edition

SWP

Jiwɪŋ

In dombore'ŋ jáa-lé SWP kwǎ-sís assó kámiŋ ǎl gis allaun káwe. In dombore-lé Gɛɛdkwǎs Ótáná Sálláná'ŋ gɛɛd kíwítíá. Na dog-si *Bariwǎrig Tóóduó*-sí assó kaw asá gáwwíteŋ piá. In dombore kí South Sudan Literature Centre *Science for P2* , 1989-si tiiłi.

Acknowledgements

We are grateful to the people at SWP who assisted us in developing this book. This book will help learners to learn about living things. We also thank Bariwarig Tooduo who translated this book.

This book is based on South Sudan Literature Centre *Science for P2* , 1989

© 2018 Fur Language Development Committee & SWP

Second Edition December 2018

First Edition August 2018

Trial Edition May 2017

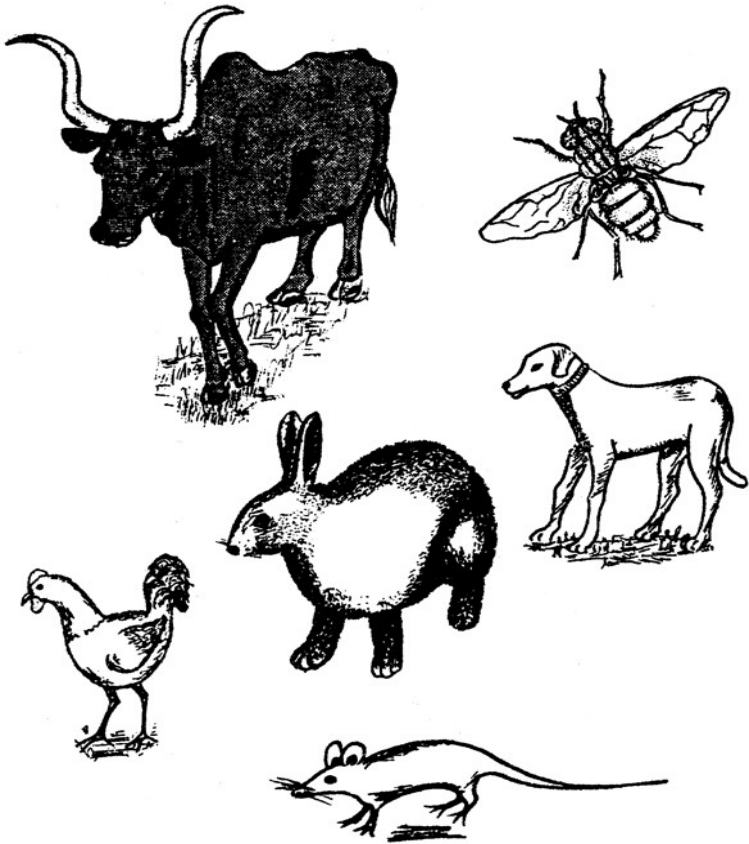
Publisher: SWP

Karába

Daldin kί karábas pis-ii.

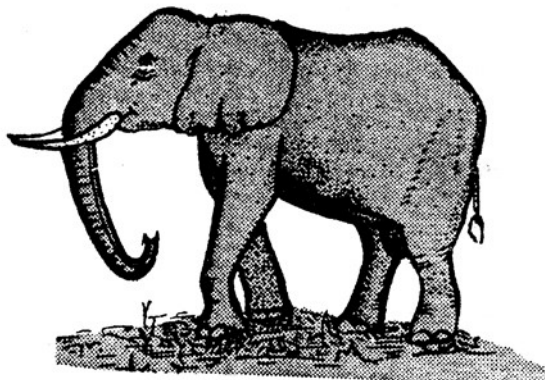
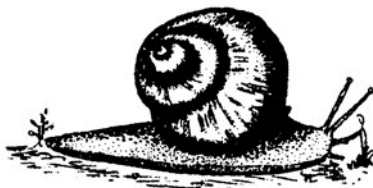
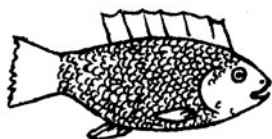
Dīna appána ge na dīna dokkéna.

Kaa karába gé āl dāfen ton'īn dakki jalā?



Íne karába kerna kaj.

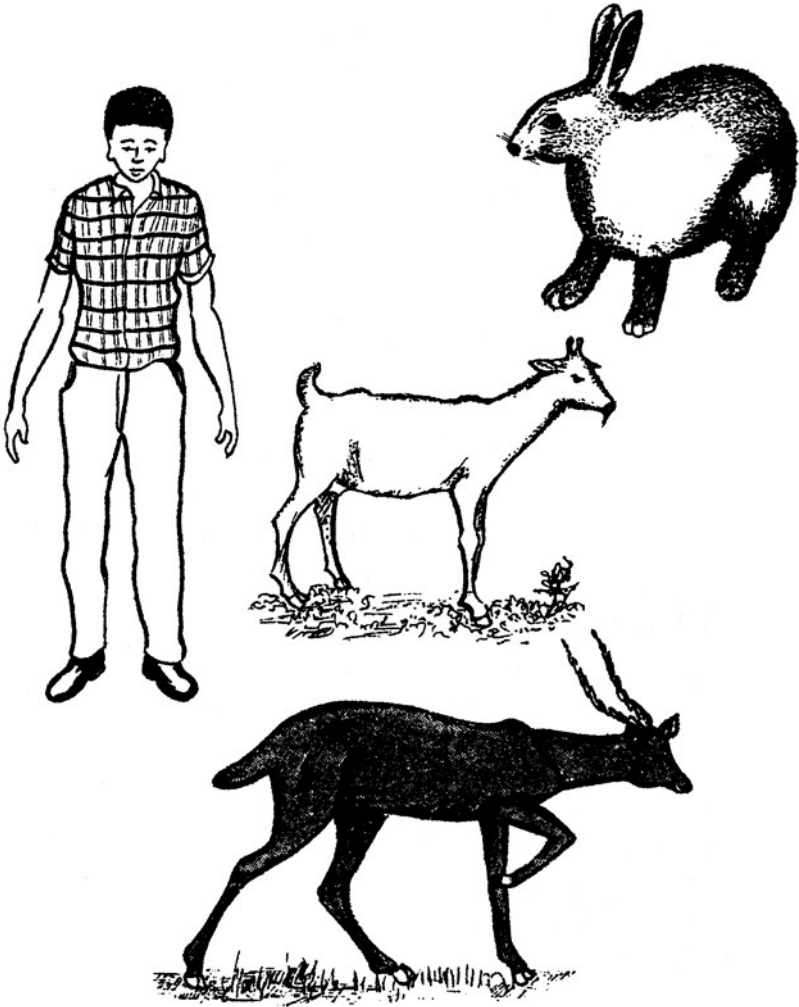
Kona taga janí sáj?



Kansukwă

Kin karába nyét kansukwă ge.

Kona taga janí sáŋ?

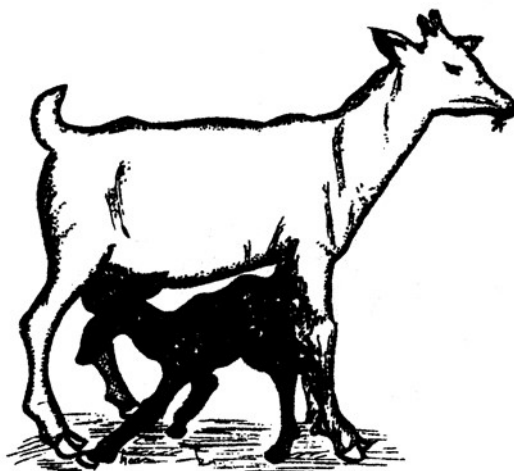


Καnsεkwα sοηηâ'η eres tarηa oηηal kαιη.

Καnsεkwα sυρηά-les nyíλíw kαιη.



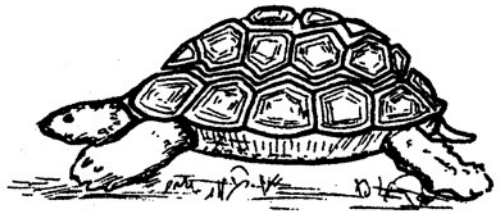
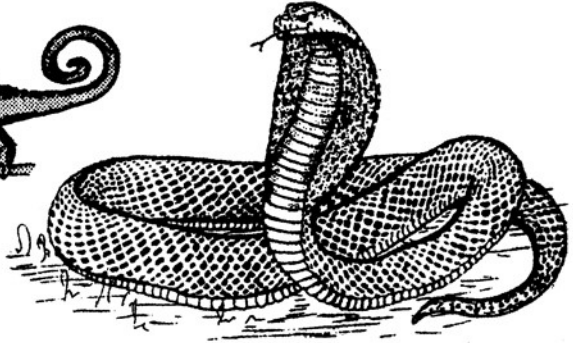
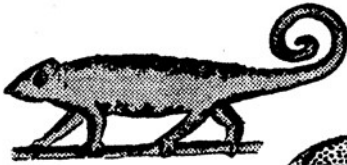
Καnsεkwα'η dogólá kίηη íyαηα-lé bora beye.



Kosotkwă

Kin karába nyét kosotkwă ge.

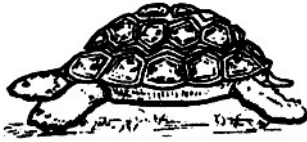
Kona taga janí sán?



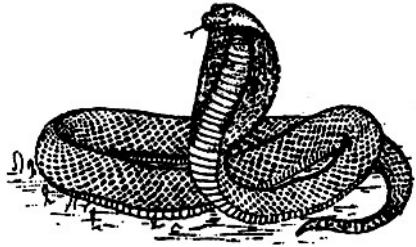
Kây kosotkwă ge nás kwa-sí nyííntía?

Kây dĩña gé ná jittĩña gé?

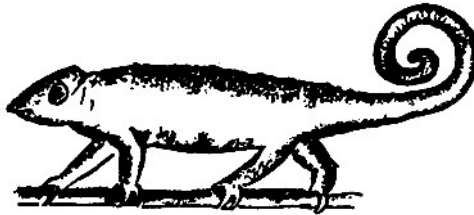
Kosotkwă aál awi?



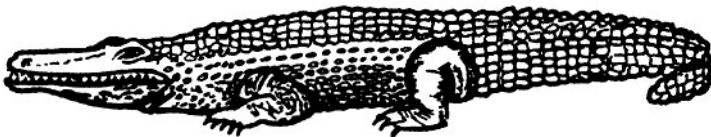
suxux'η írí



kálóhá-le

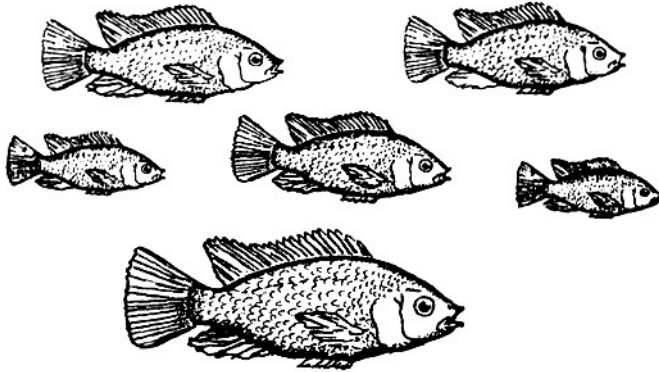


kurúhá'η írí

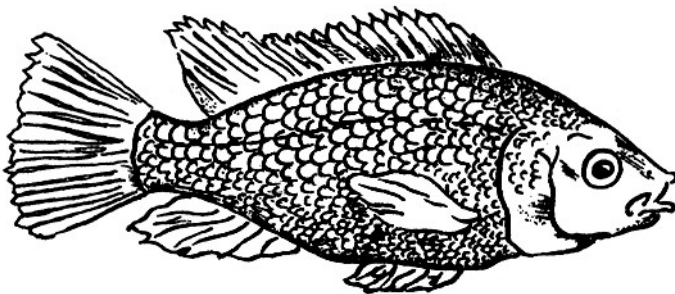


koró dió

Πύúνά na Kίaηa



Πύúνά koró awí.



Yeēη kawwas kaηη nás kēēη sūrēηá jámeli.

Πύúνά kiro jίηίτία.



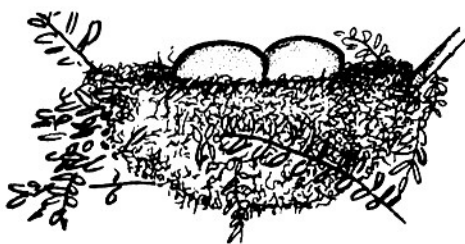
Κίαηα sonηâ'η ere
kurúηά'η ίρί ǵwi.



Yeeη arda pie.



Semo arda á piiba.
Yé bá sɛɛɛ'η ίρί ǻw.



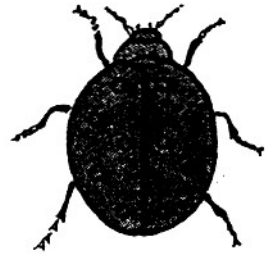
Κίαηα kɪro jíηítía.

Kalâmsɛnnéǵá

Kin karába nyét kalâmsɛnnéǵá ge.

Kona taga janí sáŋ?

Tarŋa nííŋ-si kǵ+ŋ?

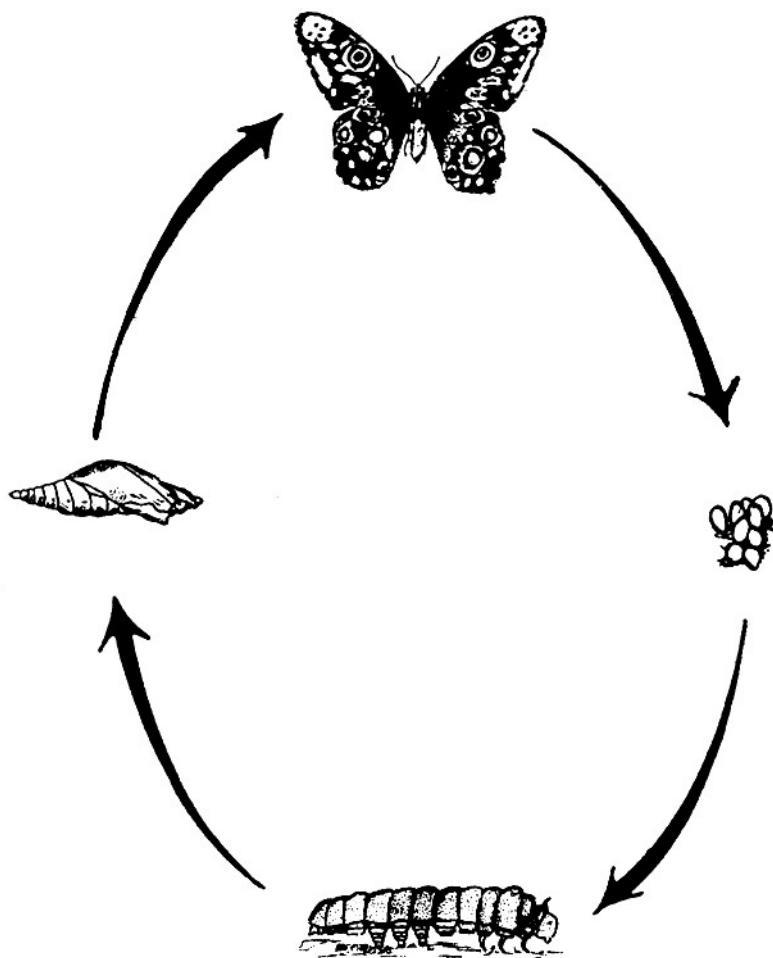


Kâŷ dǵŋa gé ná dáí-le tullé ge?

Kâŷ dǵŋa gé ná jittŋa gé?

Kalâmsunnéǵá kiro jíǵítía.

Kalâmsunnéǵá'ǵ kwǵ asá tútǵa bás jaǵneli.

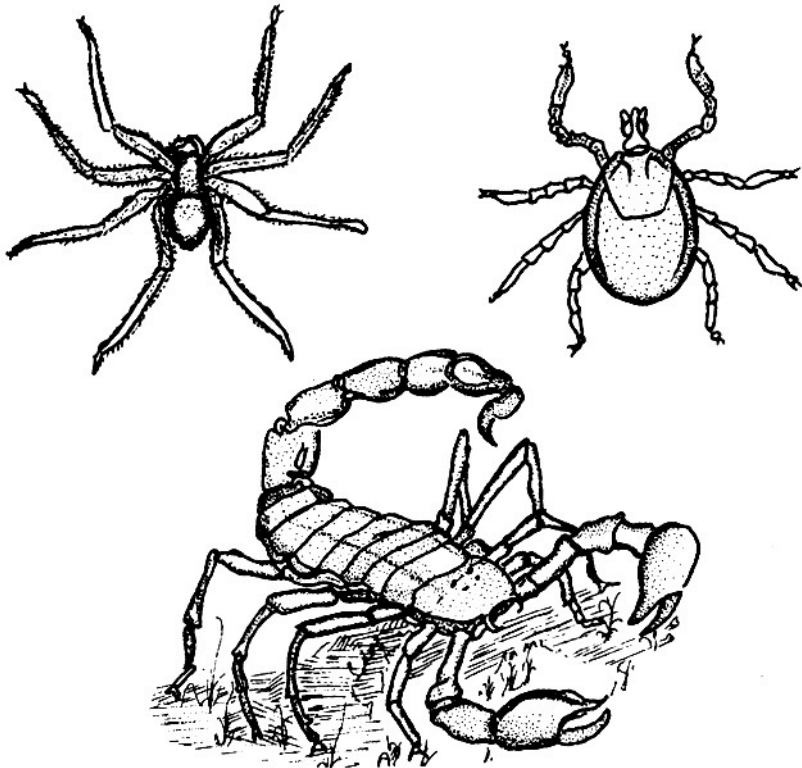


Tarḡatammankwǎ

Kin-si jalunǝ jagǝl.

Yeen kaa gé?

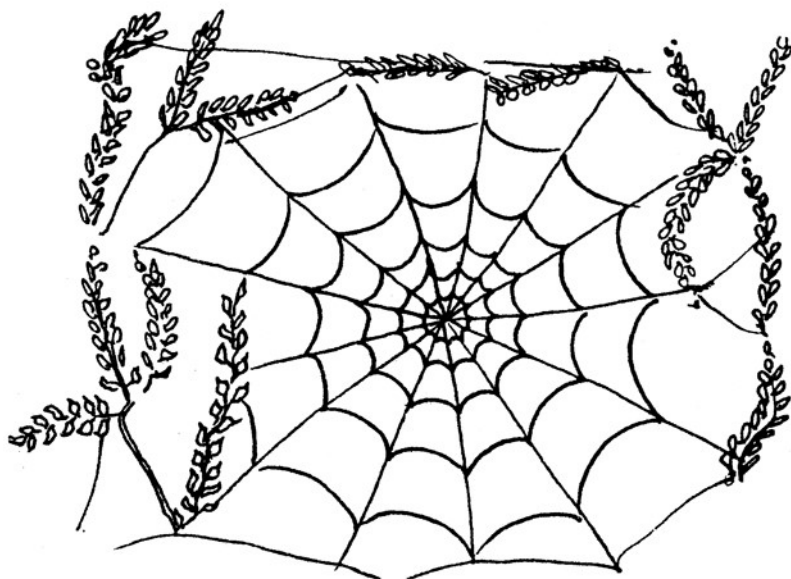
Tarḡa niíḡ-si kǝḡḡ?



Kin karába-sí tarḡatammankwǎ kǝḡǝ.

Yeeŋ kaa aame?

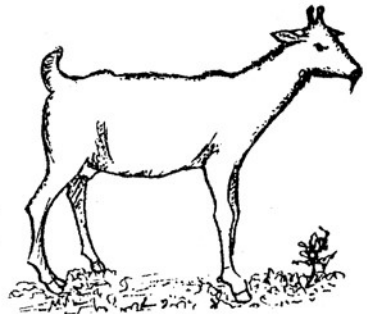
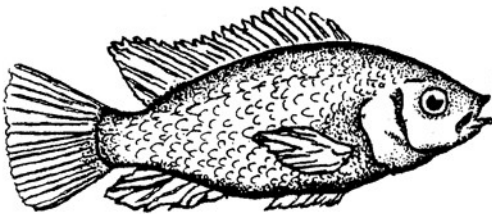
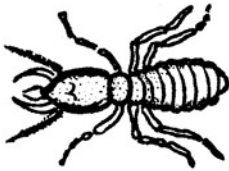
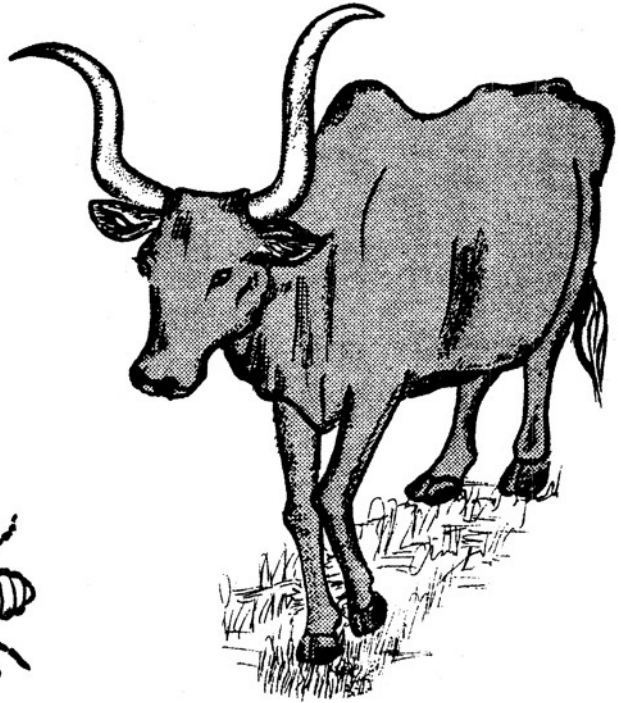
Yeeŋ aál ǵwi?



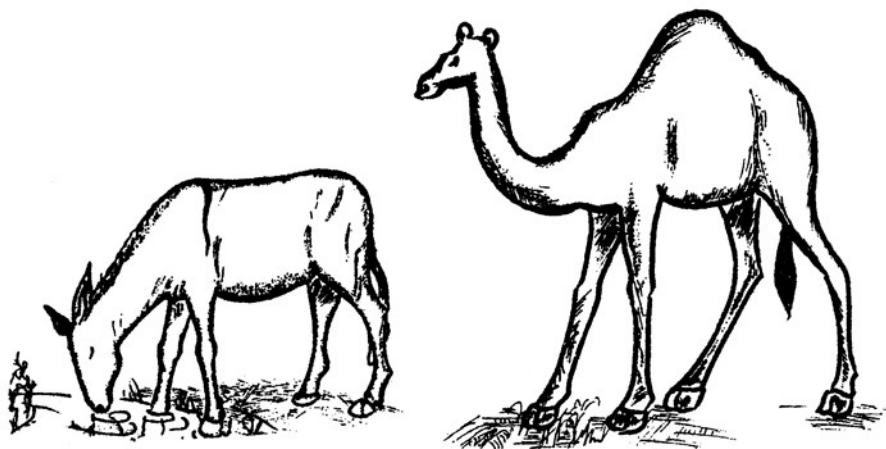
Karába ăl dái-le tullé ge

Kin karába jagfl.

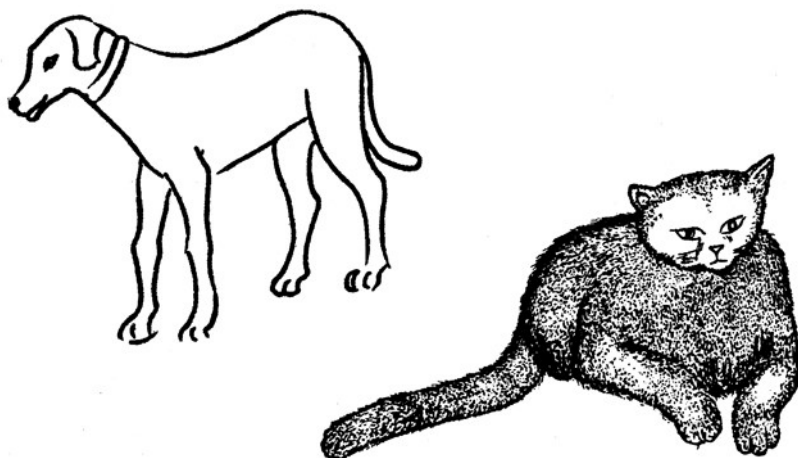
Kây-sí ge ăl kí kaam?



Kin karába-sí táárí ay-si kaw?



Kin karába-sí kaáη kɛrnyɛ?



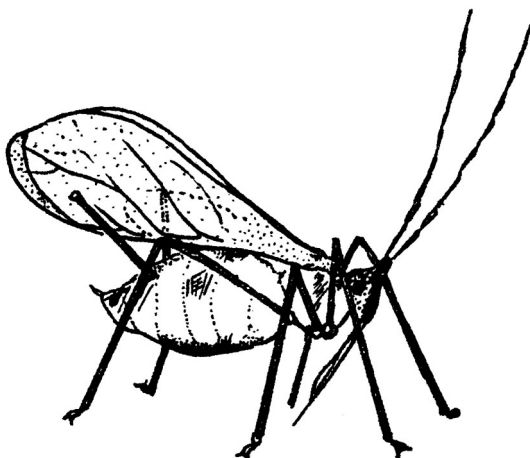
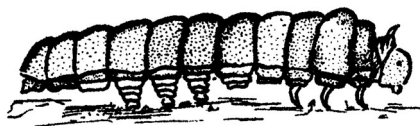
Karába jittija

Kin karába kija ay gî áásen pie?



Κιν κάρβα ρῶτάρηο-σί νυίητία σά?

Υεη κaa πie?



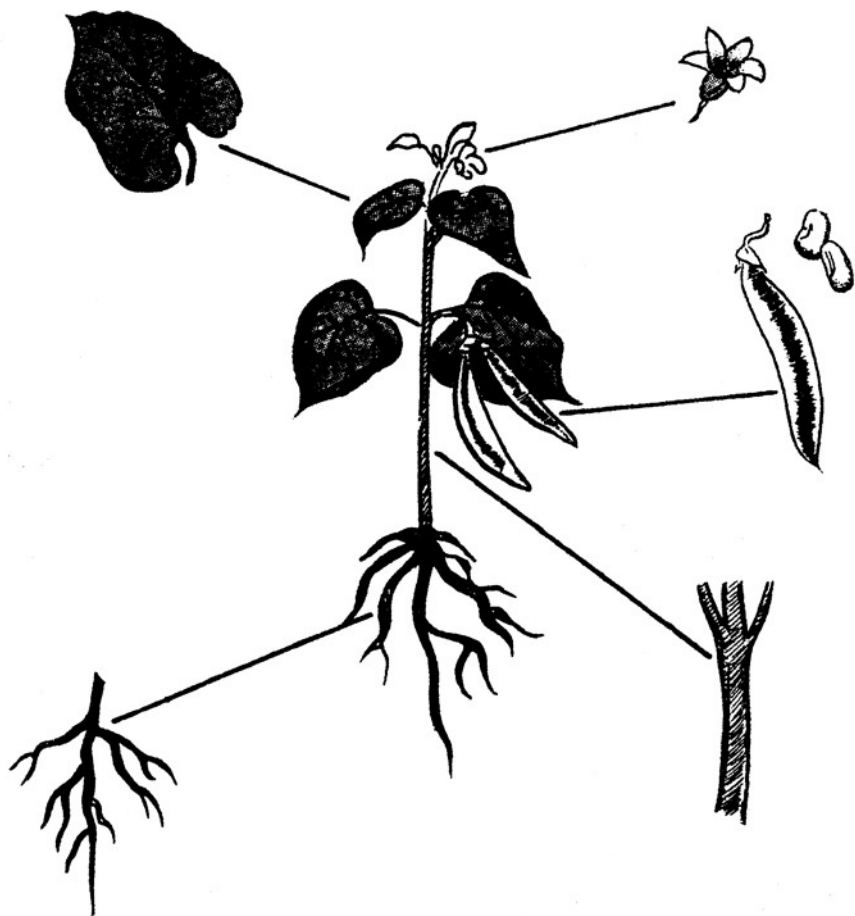
Tánaŋa

Kin tánaŋa gé.



Tánaŋa'ŋ aríŋá-sí jagíl.

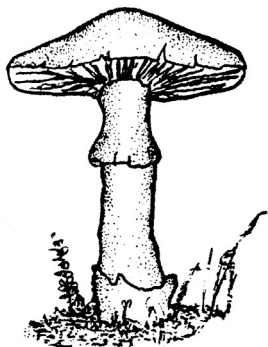
Kona taga janí sáŋ?



Dõrňá na kwă

Kin-si jalunja jagfl.

Kin tánanja dõrňá ás kañjba.

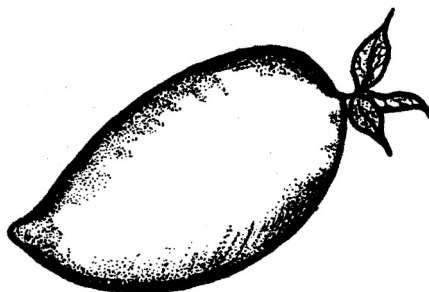
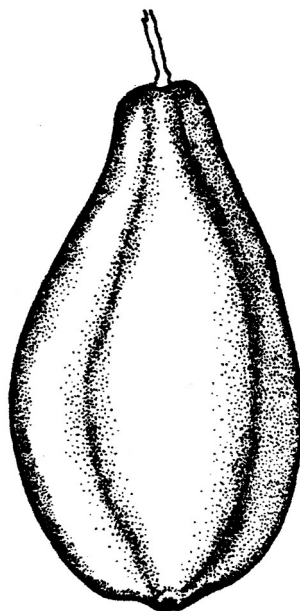
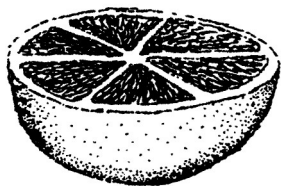


Kin tánanja gal-si dõrňá kañj.



Kin-si kurújáh'η kwă na kólá-sí jagfí.

Kona taga janí sáh?

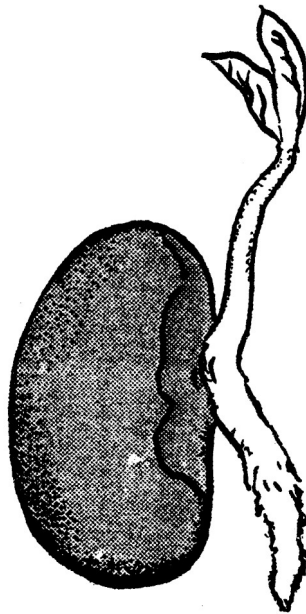


Dólán'ij j̄arɥg

In dólán-sí j̄agɣl.

Yé j̄arɣi wessê'ij írí kénjá.

Dólán'ij nondán kaa j̄alɥg ná téné!?



Kin berega'ij dió díg d̄ũu'ij ere níj t̄áɣ ná má
dííj eej.

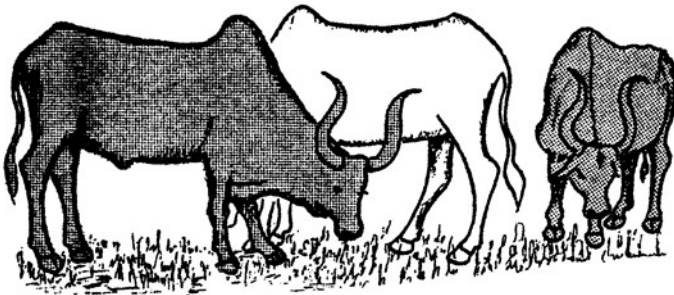
Na bereg keerkwan gal ná má iri'ij ere t̄áɣ ná
tána'ij k̄arɣi eej .

Tánaŋa ăl kí kóel

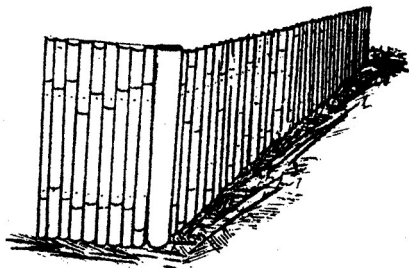
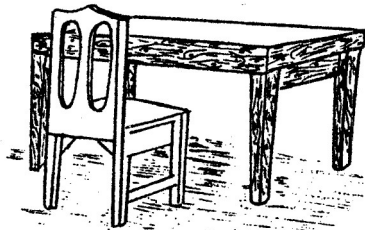
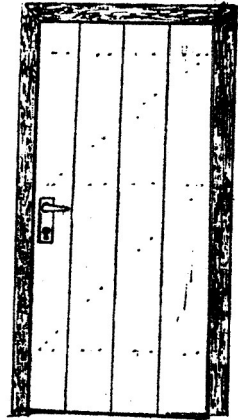
Kây tánaŋa gé ná kí kaam?



Kiŋa-sí dăy kaánġ ġis tullé-ii.



Kin tánan̄a-sí kaas kaw?



Káíj tánaŋa-sí ăw ná kaan

Anni álánj dólánj urgó.



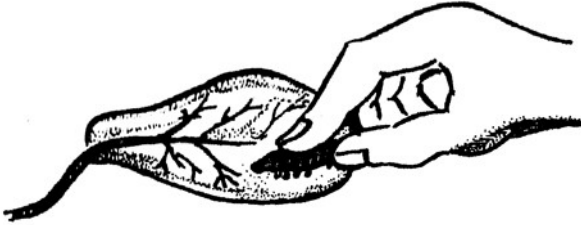
Na ká taga ay síj aáno?

Yé nima kóel.

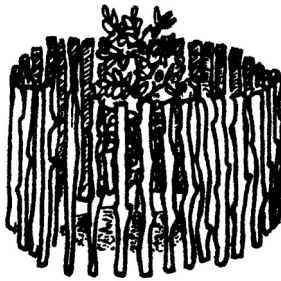


Καλâmsɛnnɛ́ǵá bǵ́ dǵ́íǵ dólǵ-sí ammía.

Καλâmsɛnnɛ́ǵá ǵw ná wǵyal.



Dólǵ kóel álǵ kwa na léwá-le kaane.



Κά κίαǵa síǵ ɛrrɛǵ.

